

INNOVATIVE ARMS

PRECISION INNOVATION TECHNOLOGY

APEX SERIES .22	PAGE: 3-4	DECEPTION 7.62	PAGE: 27
SLINGSHOT SERIES .22	PAGE: 5-6	L.D.S.P. 7.62	PAGE: 28
LEX & 9SX 9MM	PAGE: 9-10	KRYPTIC .338	PAGE: 31
SHEPHERD .45	PAGE: 11-12	MOJAVE 50BMG	PAGE: 32
W.A.R. UPPER RECEIVER	PAGE: 13-14	INTEGRAL M&P 15-22	PAGE: 33-34
GRUNT SERIES 5.56	PAGE: 15-16	INTEGRAL SIG MPX	PAGE: 35-36
INTERCEPTOR 5.56	PAGE: 19-20	INTEGRAL RUGERS	PAGE: 37-38
INTERCEPTOR 7.62	PAGE: 23-24		

*All information is subject to change, please view our website for the most up-to-date information.



INNOVATION

We are constantly in a process of innovation. Shaping the industry by developing new cutting-edge ideas and making them a reality.

DESIGN

During development we don't just go after achieving the highest level of sound suppression and flash reduction. We go even further, with a pleasant tone, outstanding features, ease of use and comfort for the end user.

DURABILITY

Our brand is authentic, durable and no-nonsense. All our designs are extensively tested and proven in real world applications to meet and exceed demands on function, reliability, and durability.

THE APEX .22 SERIES

APEX

#1001

Caliber: .22lr
Weight: 3.6oz
Length: 5.25"
O.D: 1.125"
DB Reduction: 38-41

Material: Aluminum / Stainless Steel Thread Insert
Finish: Type 3 Hard Coat Anodized / Laser Engraved
TPI: 1/2x28
MSRP: \$299

APEX MiCRO

#1002

Caliber: .22lr
Weight: 3.0oz
Length: 4.25"
O.D: 1.125"
DB Reduction: 35-38

Material: Aluminum / Stainless Steel Thread Insert
Finish: Type 3 Hard Coat Anodized / Laser Engraved
TPI: 1/2x28
MSRP: \$280

APEX-S

MULTI
STAINLESS STEEL

#1003

Caliber: Multi .22
22lr, 17hr, .22mag, 5.7x28
Weight: 9oz
Length: 5.25"
O.D: 1.125"
DB Reduction: 38-41

Material: All Stainless Steel
Finish: Black, OD Green or FDE / Hard Engraved
TPI: 1/2x28
MSRP: \$399



#1003



#1002



#1001

The APEX® is specifically designed for extraordinary sound suppression in a durable, light weight, compact package. The APEX is for use on both rifles and pistols and provides simplistic maintenance. Each APEX comes with its own take down tool that makes disassembly quick and easy. The patented advanced billet core design greatly minimizes the lead and powder build up that is common with .22lr ammunition and the core is completely removable for thorough cleaning.

.22

SLINGSHOT

#2101



SLINGSHOT .22 MULTI

Caliber: .22 multi
Weight: 6.3oz
Length: 4.5"
Material: Stainless Steel tube/core,
Aluminum retaining nut
Finish: Back, OD Green or FDE
DB Reduction: 38-41
OD: 1.125"
MSRP: \$399

SLINGSHOT MICRO

#2024



SLINGSHOT MICRO .22 MULTI

Caliber: .22 multi
Weight: 5.7oz
Length: 3.9"
Material: Stainless Steel tube/core,
Aluminum retaining nut
Finish: Back, OD Green or FDE
DB Reduction: 35-38
OD: 1.125"
MSRP: \$399

- *FULL AUTO RATED
- *Lightweight/ Compact
- *Available in two sizes
- *Available in Stainless Steel or Titanium/Stainless
- *Billet monoco
- *User serviceable with easy maintenance
- *Tool included
- *Multi .22cal

SLINGSHOT - TI TITANIUM

#2102



SLINGSHOT-TI .22 TITANIUM MULTI

Caliber: .22 multi
Weight: 5.2oz
Length: 4.5"
Material: Titanium tube, Stainless Steel core,
Aluminum retaining nut
Finish: Black, OD Green, FDE
or natural titanium
DB Reduction: 38-41
OD: 1.25"
MSRP: \$489

SLINGSHOT -TI MICRO TITANIUM

#2025



SLINGSHOT-TI MICRO .22 TITANIUM MULTI

Caliber: .22 multi
Weight: 3.9oz
Length: 3.9"
Material: Titanium tube, Stainless Steel core,
Aluminum retaining nut
Finish: Black, OD Green, FDE
or natural titanium
DB Reduction: 35-38
OD: 1.25"
MSRP: \$489

Precision accuracy to backyard plinking...

The core design and durable material choices allow the SLINGSHOT® to be .22lr full auto rated and used on an array of ammunition, such as .17HMR, .17 Mach II, .22 Magnum and 5.7x28.

.22



.22 SLINGSHOT MICRO
.22 IASW integral short barreled rifle



INNOVATIVE ARMS®



.22 SLINGSHOT



INNOVATIVE ARMS®

LEX

#1004

Caliber: 9mm
Weight: 9.8oz
Length: 7.5"
Material: Aluminum
Finish: Type 3 Hardcoat anodized
DB Reduction: 34-36
OD: 1.37"
MSRP: \$599



The LEX gives great sound suppression, versatility and durability. Rated for 9mm full auto fire, it features a multiple baffle stack and disassembles for cleaning. The LEX includes a booster piston, fixed barrel spacer and a tool for easy disassembly.

*A fixed barrel spacer is for use on firearms with fixed, non-moving barrels. Pistons are available in 1/2x28, M13.5x1LH, 1/2x36, 5/8x24. * A 5/8x24 piston and an additional rear cap are required for use with .300 Blk subsonic.

9SX

#2022

Caliber: .9mm
Weight: 8.7oz
Length: 6.6"
Material: Aluminum
Finish: Type 3 Hardcoat Anodized
DB Reduction: 34-35
OD: 1.37"
MSRP: \$599



The 9SX provides the 9mm performance you've been looking for in a compact sub-size. Accommodating both rifle and pistol the 9SX is rated for full auto 9mm fire and disassembles for cleaning. The 9SX includes a booster piston, fixed barrel spacer and a tool for disassembly.

A fixed barrel spacer is for use on firearms with fixed, non-moving barrels. Pistons are available in 1/2x28, M13.5x1LH, 1/2x36. The 9SX is not for use with .300 blk.

9mm



MULTIPLE CALIBER USE

SHEPHERD

#1006

Caliber: .45 cal **MULTI**

Weight: 10.5oz

Length: 8"

Material: Aluminum

Finish: Type 3 Hardcoat anodized

DB Reduction: 32-36

OD: 1.5"

MSRP: \$625



The SHEPHERD .45cal accommodates both pistol and rifle and is rated for full auto fire. The baffles remove for full cleaning and are type 3 hard coat anodized to give even more durability. Additional pistons are available to cover most 9mm, 300blk subsonic and .40 cal firearms. The SHEPHERD includes a booster piston, fixed barrel spacer and tool for disassembly.

*A fixed barrel spacer is for use on firearms with fixed, non-moving barrels. Pistons are available in 1/2x28, M13.5x1LH, 1/2x36, 5/8x24, .578x28, M16x1LH, 9/16x24.

.45



LIKE NO OTHER UPPER ON EARTH

The W.A.R.® is built for suppressed direct impingement 5.56 AR15/M16 rifles. Designed to give extreme advantages to the user, every detriment of suppressed firing of these rifles are now virtually eliminated.

The W.A.R. comes with forward assist, dust cover assembly and proprietary gas tube in either carbine, pistol length or mid length. The W.A.R. is for use in conjunction with only factory 5.56mm ammunition, a quality 5.56 suppressor and barrels with a gas port hole size between .084 - .093

WARFIGHTER ADJUSTABLE RECEIVER

The Killswitch® of the W.A.R. is built directly into the upper receiver, meaning that you never unshoulder the rifle or use any tools. The adjustment can even be made in the dark. You can quickly and easily switch from suppressed to unsuppressed or leave it in between the two settings to shut "off" the gas to manually cycle the rifle, all while keeping the rifle on your target.



LOCATION, LOCATION, LOCATION

The specific location of the Killswitch not only allows for use with almost every rail system on the market, but it reduces the gas just prior to interfacing with the carrier key. This means that the rifle not only sounds quieter to the shooter's ear, but it also reduces the wear of the rifle component parts from the reduction of heat and excessive fouling.

USER COMFORT

When the W.A.R. is in the suppressed mode it virtually eliminates all the "blow back" in the shooters face, along with the burning eyes and the choking gas. The design of the W.A.R. allows the gas tube to fully pressurize which can make the rifle "feel" different. Most users say that their rifle feels like it shoots softer and smoother. This is the only upper in the world that delivers all these advantages.

GRUNT

#1008



GRUNT 5.56

Caliber: 5.56mm
Weight: 17.5oz
Length: 6.25"
Material: Stainless Steel
Finish: Back, OD Green or FDE
TPI: 1/2x28
DB Reduction: 32-35
OD: 1.5"
MSRP: \$599

GRUNT EXOSKELETON

#1009



GRUNT 5.56 EXOSKELETON

Caliber: 5.56mm
Weight: 18.8oz
Length: 6.25"
Material: Stainless Steel
Finish: Black, OD Green or FDE
TPI: 1/2x28
DB Reduction: 32-35
OD: 1.5" / 1.58" EXOSKELETON
MSRP: \$649

- *FULL AUTO RATED
- *Available with or without Exoskeleton Shroud
- *Available in Black, OD Green or FDE
- *Billet monocoresh internals
- *No Internal welds (not user serviceable)
- *All stainless steel construction
- *Wrench flats
- *Easy pin and weld

GRUNT-M MINI

#1010



GRUNT-M 5.56 MINI

Caliber: 5.56mm
Weight: 13oz
Length: 5"
Material: Stainless Steel
Finish: Black, OD Green or FDE
TPI: 1/2x28
DB Reduction: 23-28
OD: 1.5"
MSRP: \$599

GRUNT-M MINI / EXOSKELETON

#1011



GRUNT-M 5.56 MINI / EXOSKELETON

Caliber: 5.56mm
Weight: 14oz
Length: 5"
Material: Stainless Steel
Finish: Black, OD Green or FDE
TPI: 1/2x28
DB Reduction: 23-28
OD: 1.5" / 1.58" EXOSKELETON
MSRP: \$649

All Grunt® and Grunt-M models are compact and lightweight. The patented one piece core is machined from billet bar stock and have no internal welds. They are direct-thread on and are full auto rated on barrels down to 10". They also feature wrench flats that allow easy pin and weld for short barrels.

5.56



5.56 GRUNT-M with EXOSKELETON Shroud on an AR15 outfitted with the Warfighter Adjustable Receiver.



5.56 INTERCEPTOR quick attach





Sleek, balanced, durable-high strength...

All INTERCEPTOR™ models give excellent sound suppression, recoil reduction and precision accuracy in a compact package. The patented one piece core is machined from billet bar stock and has no internal welds. Each INTERCEPTOR comes with one quick attach flash hider mount and attaches/removes from the barrel in seconds. They are full auto rated on barrels down to 10" and are also manufactured in 7.62.

INTERCEPTOR

#2103



INTERCEPTOR 5.56

Caliber: 5.56mm
 Weight: 18oz
 Length: 6.6"
 Material: Stainless Steel
 Finish: Back, OD Green or FDE
 TPI: 1/2x28
 DB Reduction: 33-36
 OD: 1.5"
 MSRP: \$789

INTERCEPTOR^{EXOSKELETON}

#2104



INTERCEPTOR 5.56 EXOSKELETON

Caliber: 5.56mm
 Weight: 20oz
 Length: 6.6"
 Material: Stainless Steel
 Finish: Black, OD Green or FDE
 TPI: 1/2x28
 DB Reduction: 33-36
 OD: 1.58"
 MSRP: \$839

- *FULL AUTO RATED
- *Available with or without Exoskeleton Shroud
- *Available in Black, OD Green or FDE
- *Billet monocoore internals (not user serviceable)
- *No internal welds
- *All stainless steel construction
- *Quick Attach
- *Includes one Flash Hider Mount

5.56



7.62 Long Distance Service Provider (L.D.S.P.) with EXOSKELETON Shroud on M1A
7.62 DECEPTION on SBR AK47



INNOVATIVE ARMS®



7.62 Long Distance Service Provider (L.D.S.P.) with EXOSKELETON Shroud on M1A



INNOVATIVE ARMS®

INTERCEPTOR

#2105

Caliber: 7.62 MULTI

Weight: 22oz

Length: 7.7"

Material: All Stainless Steel

Finish: Black, OD Green or FDE

DB Reduction: 33-36

OD: 1.5"

MSRP: \$899



The INTERCEPTOR™ 7.62 gives a plethora of sound suppression, recoil reduction and precision accuracy. The patented one piece core is machined from billet bar stock and has no internal welds (not user serviceable). The INTERCEPTOR 7.62 comes with one flash hider quick attach mount threaded 5/8x24 and attaches/removes from the barrel in seconds. Mounts for barrels threaded 1/2x28 are available. The INTERCEPTOR 7.62 is rated for multiple calibers and almost every rifle application, including 7.62, .300blk, .243, .260, 6mm, 6.5, 5.56 and .223 on down.



INTERCEPTOR^{EXOSKELETON}

#2106

Caliber: 7.62 MULTI

Weight: 24oz

Length: 7.7"

Material: All Stainless Steel

Finish: Black, OD Green or FDE

DB Reduction: 33-36

OD: 1.5" / 1.58" EXOSKELETON

MSRP: \$950

The INTERCEPTOR 7.62 is full auto rated on barrels down to 10" (7.5" with .300blk).
*The INTERCEPTOR with Exoskeleton™ Shroud # 2106 is required for use with 300WM.

The **EXOSKELETON** shroud difference...

Our patented Exoskeleton Shroud gives many advantages. Not only does it re-enforce the initial blast chamber but also gives added grip when mounting onto the rifle, and works as a heat sink, reducing wear and increasing longevity.

7.62



7.62 DECEPTION with EXOSKELETON Shroud on custom build short barreled AK47



INNOVATIVE ARMS®



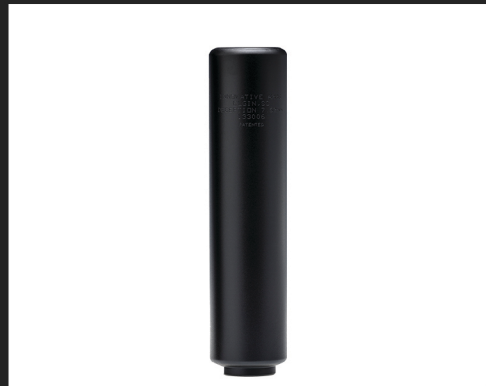
7.62 INTERCEPTOR quick attach



INNOVATIVE ARMS®

DECEPTION

#1014



DECEPTION 7.62

Caliber: 7.62
Weight: 20oz
Length: 7.6"
Material: Stainless Steel
Finish: Back, OD Green or FDE
TPI: 5/8X24
DB Reduction: 33-36
OD: 1.5"
MSRP: \$699

DECEPTION EXOSKELETON

#1015



DECEPTION 7.62 EXOSKELETON

Caliber: 7.62
Weight: 21oz
Length: 7.6"
Material: Stainless Steel
Finish: Back, OD Green or FDE
TPI: 5/8X24
DB Reduction: 33-36
OD: 1.5" / 1.58" EXOSKELETON
MSRP: \$749

Don't be deceived by its compact size.

The DECEPTION® gives outstanding sound suppression, durability and accuracy.

The patented one piece core is machined from billet bar stock and has no internal welds. The DECEPTION is direct-thread on in 5/8x24 and is full auto rated on barrels down to 10" (7.5" with .300blk). Wrench flats are incorporated to allow easy pin and weld for shorter barrels.

The DECEPTION is available with or without our patented Exoskeleton Shroud and is rated for multiple calibers and almost every rifle application, including 7.62, 308, .300blk, .243, .260, 6mm, 6.5, 5.56 and .223 on down. Adapters for barrels threaded 1/2x28 are available.

*The Exoskeleton Shroud is required for use with 300WM.

L.D.S.P.

#1012



L.D.S.P. 7.62

Caliber: .762
Weight: 24oz
Length: 8.5"
Material: Stainless Steel
Finish: Black, OD Green or FDE
TPI: 5/8x24
DB Reduction: 33-36
OD: 1.5"
MSRP: \$699

L.D.S.P. EXOSKELETON

#1013



L.D.S.P. 7.62 EXOSKELETON

Caliber: .762
Weight: 25oz
Length: 8.5"
Material: Stainless Steel
Finish: Black, OD Green or FDE
TPI: 5/8x24
DB Reduction: 33-36
OD: 1.5" / 1.58" EXOSKELETON
MSRP: \$749

The Long Distance Service Provider

The L.D.S.P. gives precision accuracy with minimal and repeatable point of impact shift.

The unique design of the L.D.S.P. provides outstanding sound suppression, and recoil reduction. The patented one piece core is machined from billet bar stock and has no internal welds, giving the L.D.S.P. extreme durability.

The L.D.S.P. is direct-thread on in 5/8x24 and is full auto rated on barrels down to 10" (7.5" with .300blk). Wrench flats are incorporated to allow easy pin and weld for shorter barrels.

The L.D.S.P. is available with or without our patented Exoskeleton Shroud and is rated for multiple calibers. Adapters for barrels threaded 1/2x28 are available. *The Exoskeleton Shroud is required for use with 300WM.

7.62



.22 SLINGSHOT -Ti



INNOVATIVE ARMS®



9mm LEX



INNOVATIVE ARMS®



.338 LM

KRYPTIC

#1023

Caliber: .338LM

Weight: 32oz

Length: 8.5"

Material: Stainless Steel

Finish: Black, OD Green or FDE

DB Reduction: 34-35

OD: 1.62" / 1.74" EXOSKELETON

MSRP: \$950

The KRYPTIC™ delivers! This silencer gives versatility, recoil reduction, repeatable accuracy and outstanding sound reduction. The Kryptic also comes standard with our patented Exoskeleton Shroud.

The one piece core is machined from billet bar stock and has no internal welds. The Kryptic is a direct-thread mount, features wrench flats, and is built in 3/4x24, 5/8x24 or M18x1RH. With an array of thread adapters available, it's rated for multiple calibers and almost every rifle application, including .300WM, 7.62, 308, .300blk, .243, .260, 6mm, 6.5 and 5.56.



50 BMG

MOJAVE

#1070

Caliber: 50 BMG

Weight: 5lbs 3oz

Length: 14" / Added Length: 10.75"

Material: Chromoly Steel

Finish: Black, OD Green or FDE

DB Reduction: 35

OD: 2.5"

MSRP: \$2,100

Includes : two port muzzle break & shims

Giving absolute performance in all areas of suppressed fire, the MOJAVE makes shooting your rifle absolutely pleasant, not only for you but also to any bystanders.

The high efficiency and strength of the monoco design, extremely reduces the sound signature and concussion with an added bonus of outstanding flash and recoil reduction.

BIGBORE

IASW

#1016

Caliber: .22lr
Length: 16.25"
O.D: 1.25"
Material: Aluminum Body
Stainless Steel Core
Finish: Type 3 Hard Coat Anodized
Laser Engraved
MSRP: \$1,150



This will quickly become a rifle that you will bring to the range every time. The only complaint that you will have is that you are spending too much money on .22lr ammo. We take a standard S&W M&P 15-22 and make it stealth quiet. The barrel is ported to give you the ability to use high velocity ammunition while achieving subsonic velocities. Our patented one piece core is machined from billet stainless steel bar stock and is completely user serviceable *tool included. The construction of the integral is built to last and is FULL AUTO RATED.

IASW -S

#1026

Caliber: .22lr
Length: 8"
O.D: 1.25"
Material: Aluminum Body
Stainless Steel Core
Finish: Type 3 Hard Coat Anodized
Laser Engraved
MSRP: \$1,325



*Shown in MOE upgrade

This is the short barreled version of our IASW integral. We take a standard S&W M&P 15-22 and precision machine it down to bring it to a barrel/integral length of 8". Just like our full-size IASW integral, our patented one piece core is machined from billet stainless steel bar stock and is completely user serviceable *tool included. The construction of the integral is built to last and is FULL AUTO RATED.

INTEGRAL
FIREARMS

MPX INTEGRAL



9MM SMPX

#2117

Caliber: 9mm
Barrel Suppressor/ Length: 12"
OD: 1.37"
Material: Aluminum Body
Stainless Steel Core
Finish: Type 3 Hard Coat Anodized
Laser Engraved
MSRP: \$2,325

*Shown in the SBR upgrade



MPX 9MM INTEGRAL

We integrally suppress the Sig MPX pistol with our proven one piece billet core design. The core is machined from stainless steel bar stock and easily removes for cleaning. The total barrel /suppressor length is 12" and is also available as an SBR.

- *Billet one piece core
- *User serviceable
- *Tool included

RUGER INTEGRAL



.22LR

All of our integrals on Ruger firearms feature a one piece billet core and are user serviceable. Each integral comes with a tool, however, you can also use any standard 3/8 drive wrench. Simple, easy, and quiet!

- *Billet one piece core
- *User serviceable
- *Easy maintenance
- *Tool included



MK III INTEGRAL

Caliber: .22lr
Material: All Stainless Steel
Finish: Black or Brushed Stainless
Maintains factory front sight
MSRP: \$1,289



CHARGER TD INTEGRAL

Caliber: .22lr
Material: All Stainless Steel
Finish: Black, Brushed Stainless, OD Green or FDE
Barrel/ Suppressor Length: 10"
MSRP: \$1,150



10/22 TD INTEGRAL

Caliber: .22lr
Material: All Stainless Steel
Finish: Black, Brushed Stainless, OD Green or FDE
Barrel/ Suppressor Length: 16.25"
MSRP: \$1,150
MSRP: on non takedown model \$1,095